

# Effective record keeping and ordering of medicines

A quick guide for home care managers  
providing medicines support



*Good record keeping protects people receiving  
medicines support and their care workers*

Adults may need support to manage their medicines safely and effectively, and for some people this will be provided as part of a home care service.

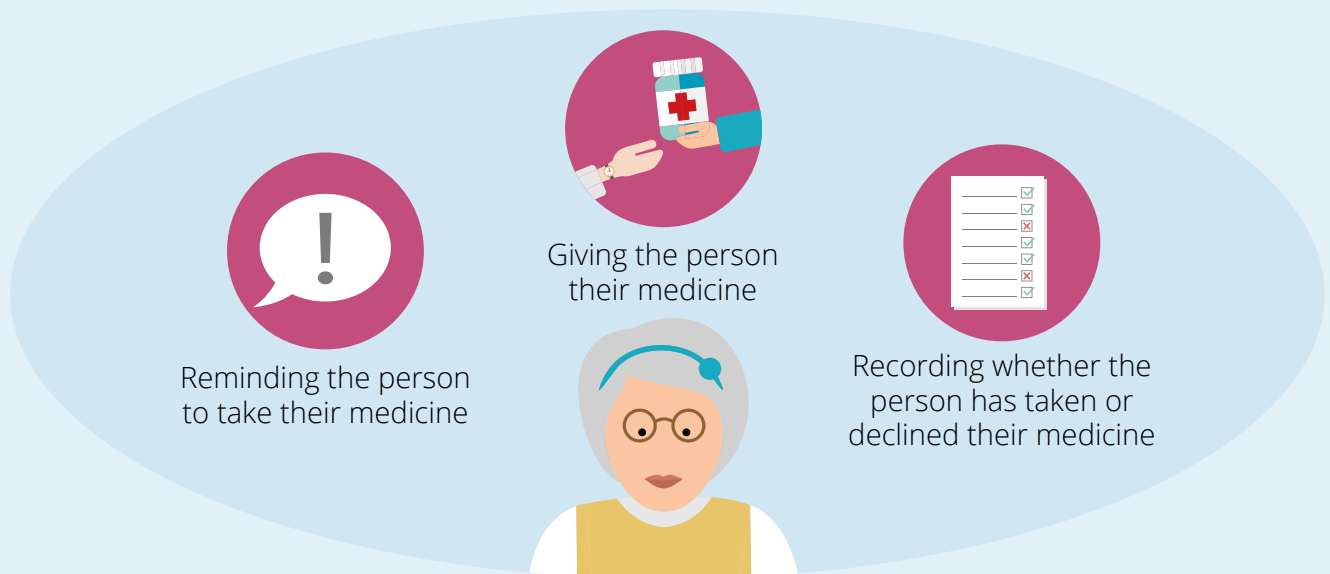
When medicines support starts, tell the person's GP and pharmacy, and give them details of who to get in touch with about the medicines. This may be the person themselves or a named contact.

Make sure there is a medicines policy in place, including processes for two important aspects of managing medicines:

- Keeping records that are accurate, up to date and accessible
- Ordering and receiving a supply of a person's medicines

## Record keeping

For each medicine, on each occasion, care workers must record the support they give, including for any over-the-counter medicines. Support might include:



Any support given should be recorded on a medicines administration record (MAR). The MAR will preferably be a printed record provided by the pharmacist, doctor or home care provider and should include:

- Name and date of birth
- Name, formulation and strength of the medicine(s)
- How often or the time the medicines should be taken
- How the medicine is taken or used – e.g. by mouth, applied to the skin
- Name of GP practice
- Any stop/review date
- Additional information – e.g. specific instructions or known drug allergies

The illustration shows a 'Medicines administration record' form. It includes a header with a small photo of the elderly woman and the title 'Medicines administration record'. Below the header are several rows of text boxes for patient information. The main body of the form consists of two large grid tables. The first table has a pink pill icon in the first column, and the second table has a yellow and red pill icon in the first column. The grids are designed for recording the administration of different medicines over time.

If a family member or carer gives medicines support that is usually provided by home care staff, agree with the person and their family how to record this.

Home care services must also have clear processes for recording any changes to a person's medicines or any medicines-related problems.

# Checking and ordering medicines

Medicines are usually ordered by the person and their family, but occasionally it may be agreed that the home care provider will do it. If so, the provider must ensure that the correct amounts of the medicines are available when they are needed.

Care workers involved in ordering medicines need to be trained and assessed as competent to do so. Make sure they understand that it is important to have enough time to:

- ✓ Check which medicines are needed
- ✓ Order the required medicines through the GP practice
- ✓ Record when the medicines have been ordered, including the name, strength and quantity
- ✓ Record when the medicines have been received
- ✓ Check for any differences between the medicines ordered and those supplied

Care workers must also know what to do if they identify any differences between the medicines ordered and those received – for example, check with the GP or pharmacist.



Providing medicines support may involve managing any over-the-counter medicines requested by the person, including herbal medicines and vitamins. There should be clear processes in place to ensure that care workers:



Seek advice from a pharmacist or other health professional when needed



Check the person understands and accepts any risk linked to the medicine

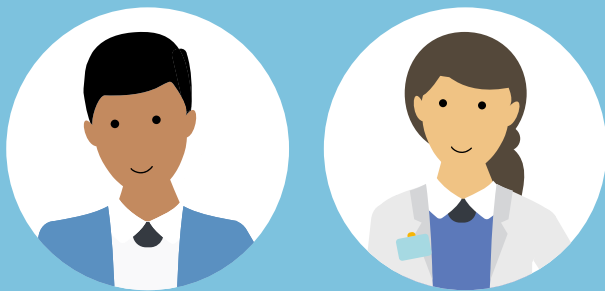


Know what information should be recorded about the medicine. This may include the name, strength and quantity

# What to expect from health professionals

If a home care service is supporting a person to manage their medicines, the pharmacist or dispensing doctor should:

- Supply medicines in their original packaging
- Make reasonable adjustments to the packaging if this would help the person manage their medicines e.g. non-childproof tops
- Supply an information leaflet for each medicine
- Identify if a monitored dosage system is needed to support the person to take their medicines
- Provide a description of the appearance of each medicine in the monitored dosage system



## Further information

### Managing medicines for adults receiving social care in the community

– NICE guideline, covering a range of aspects of managing medicines including safeguarding and medicines-related problems

### Medicines management for people receiving social care in the community

– NICE quality standard

### Fundamental standards – Care Quality Commission

### Community adult social care services: information for providers

– Care Quality Commission

### Home care: delivering personal care and practical support to older people living in their own homes – NICE guideline

This content has been co-produced by NICE and SCIE and is based on NICE's guideline on managing medicines for adults receiving social care in the community.

**National Institute for Health and Care Excellence**  
[www.nice.org.uk](http://www.nice.org.uk)

© NICE 2018. All rights reserved. See [Notice of Rights](#)

**Social Care Institute for Excellence**  
[www.scie.org.uk](http://www.scie.org.uk)

### Discussing and planning medicines support

– NICE quick guide for home care managers providing medicines support

